

O.K. W. Smith 6-10-44

C.N.H.
5-24-44
M.R.M.
6-1-44
6-5-44

B12609 SH. 169

C.R. Beal 6-10-44

DIAGRAMS OF SEARCHLIGHT SIGNALS

U. S. S. CO., SWISSVALE, PA.

SCALE 1/2" = 1'-0"

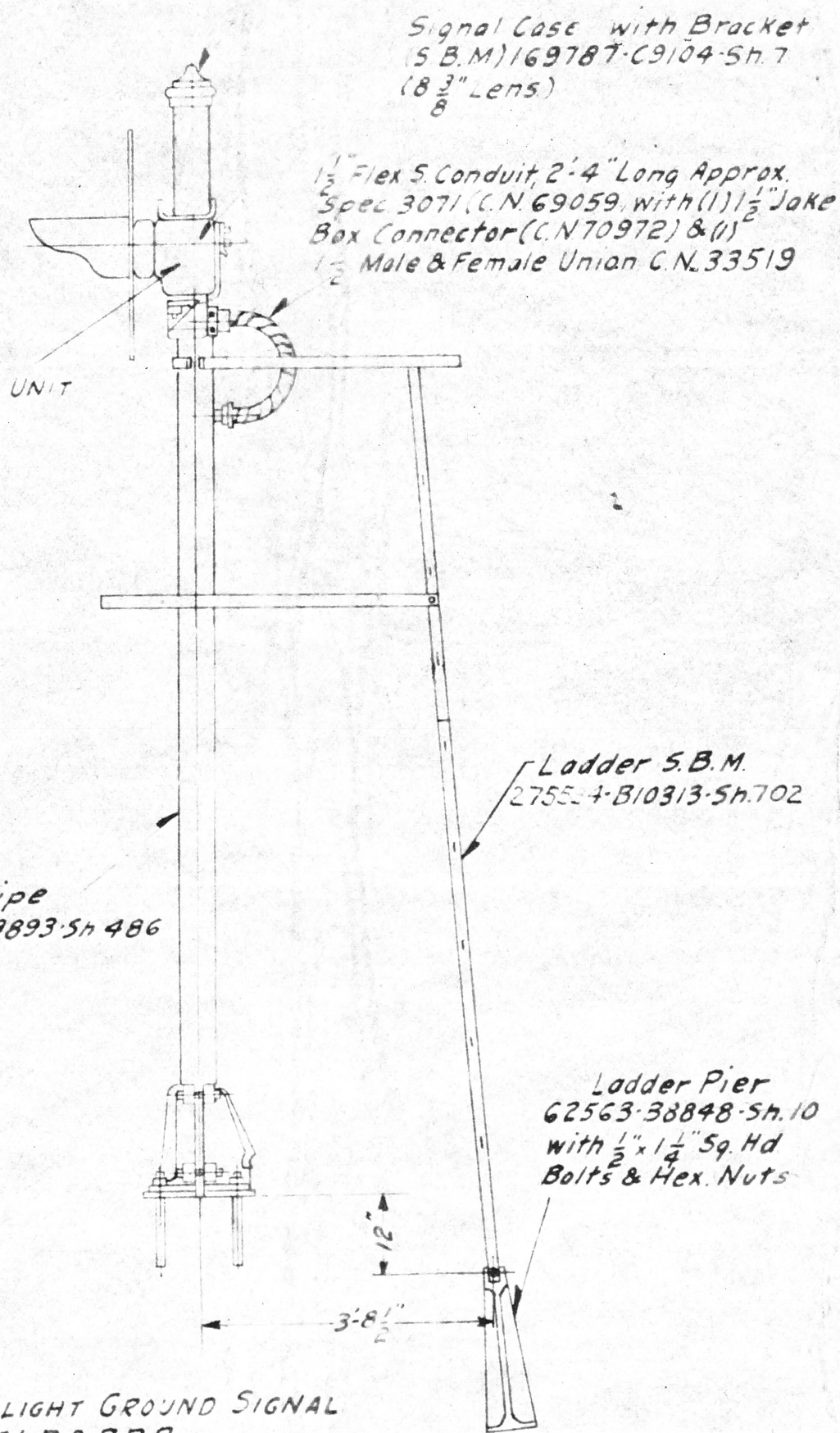
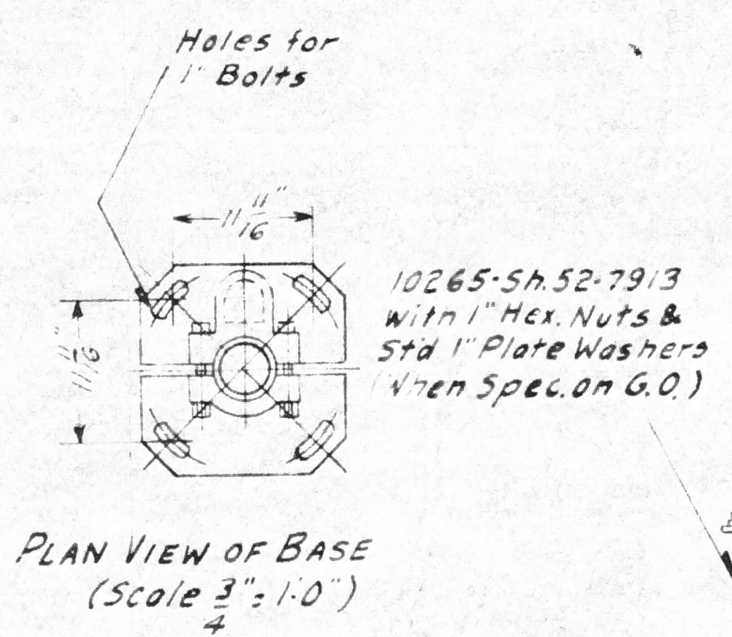
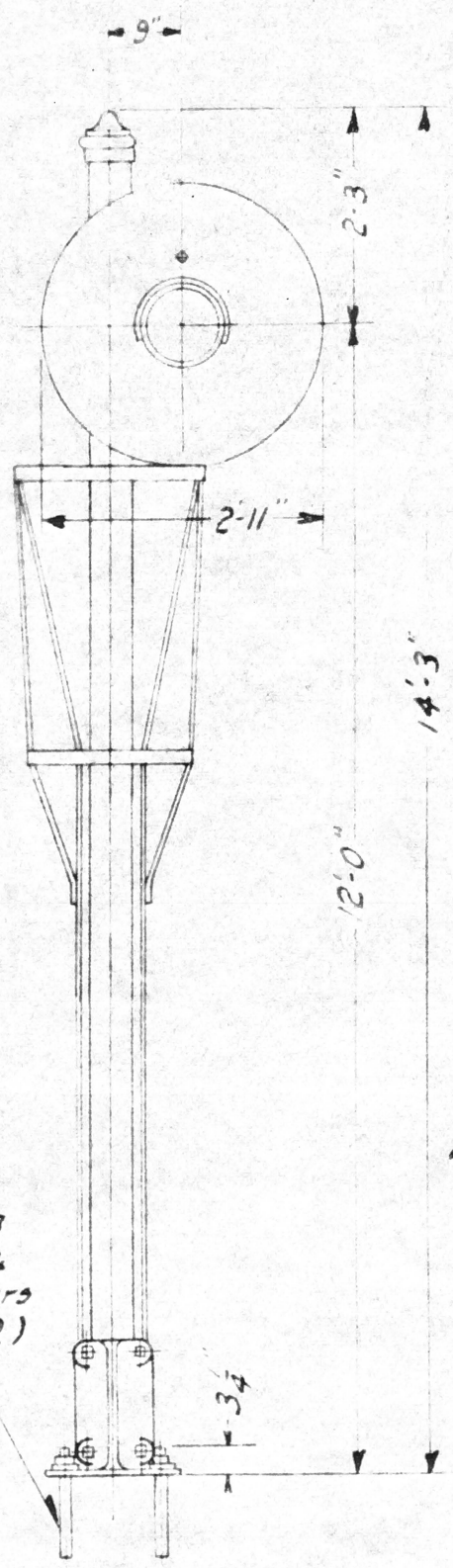
150818-B8121-Sh.17

12-1-44 1
On 245673
& 675 Y-R-R
was Y-R-B
Req 75962
C.N.H.
R.W.D. 2/8

2-4-48 2
On all Pcs.
Ladder S.B.M.
Ref. was
138114-B10313
Sh. 401.
Req. 85487
A.C. 8/1
G.H. 2-18-48

10-16-51 3
On 245672
& 674, Oper.
Unit was
169502-
C9157-Sh.10
On 245673
& 675, Oper.
Unit was
176998-
C9157-Sh.10.
Req. 95355
J.R.S. K.E.K.
1-3-52

C.M. ST. P.&P. REF. NO.	S.B.M.	COLORS IN UNIT	LAMP	LAMP RESISTOR	OPERATING UNIT
1	245672	Y-R-G	138.35W, 8V. 159440-Sh.12-12409	2-0hms	3-Pos 290150-C9157-Sh.12
2	245673	Y-R-R	138.35W, 8V. 159440-Sh.12-12409	2-0hms	2-Pos 294138-C9157-Sh.12
3	245674	Y-R-G	5W, 8V. 168741-Sh.12-12409	10-0hms	3-Pos 292150-C9157-Sh.12
4	245675	Y-R-R	5W, 8V. 168741-Sh.12-12409	10-0hms	2-Pos 294138-C9157-Sh.12



ONE-UNIT-STYLE "H-2" SEARCHLIGHT GROUND SIGNAL
First made for C.M. St. P. & P.R.R.

G.O. 513530
Req. 73826

B 12609 -SH. 169